



TEST AREA n°6

near capital Prishtina,
Kosovo



Land repurposing in support to Kosovo coal regions in transition

1/2

Scale

Regional scale, focusing on six potential demonstration sites of the Kosovo Energy Corporation (KEK) near capital Prishtina, Kosovo, where various land redevelopment options and investment is being considered as part of coal regions in transition.

Special focus

Development of low input remediation as a part of site restoration for large areas, and the development of management tools for site prioritisation



Type of soil contaminants

KEK: Organic and heavy metal contamination caused by lignite mining and lignite power generation waste (including overburden dumps, ash deposits, tailings ponds etc.), including regional solid waste dump.



Figure 1 Functional areas
Source: Support to Kosovo Coal Regions in Transition, Land Repurposing Assessment for the Kosovo Mines, November 2023, The World Bank

There are six areas functional areas identified for redevelopment:

- Former ash dump Kosova A (Area 1A) and Dragodan outside overburden dump (1B) with a ground surface area of 2.4 km²
- South outside overburden dump (Area 2) with a ground surface area of 6.13 km²
- Liquid fly ash deposition, municipal waste landfill, overburden dump Palaj and gasification plant area (Area 3) with a ground surface area of 4.09 km²
- Bardh and Mirash mined-out open pits, and currently active Sibovc coal mine (Area 4) with a ground surface area of 9.48 km²
- Former outside overburden dumps Vasilev (5A) and Kalaja (5B) with a ground surface area of 3.24 km²
- Kosova B Ash (Area 6) with a ground surface area of 0.93km².

Current status of Test Area

As part of coal regions in transition, KEK is looking to re-evaluate the use of land, approx. 13 km² to design mitigation strategies for workers and communities affected by coal phase out. Possible land use utilization include forest, natural habitats, agriculture, energy production (solar park), business/residential development, and water bodies.

TEST AREA n°6

near capital Prishtina, Kosovo



2/2

Ambition for the end of the project

The test area(s) will be used to:

- examine the potential of Nature-based Solutions and other low input systems to provide durable and sustainable risk management solutions at the four demonstration sites;
- provide reliable valuation of key wider benefits such as generation of employment and enterprise; health and social benefits for the restoration at each site;
- provide a more general “toolbox” that is usable by the Kosovo authorities to explore sustainable and risk-based land management at sites in general and provide an initial valuation of the wider benefits to be gained;
- provide strategic guidance on how the remaining sites in Kosovo can be prioritised for action based on the seriousness of the risk problems they pose; and the wider economic value of their restoration.

Ambition beyond the project:

The restoration concept and valuation contribute to the implementation of a possible Western Balkans Investment Framework (WBIF) project titled “Rehabilitation and repurposing of non-rehabilitated KEK mining lands an area of 1,311 hectares”, as well as national strategy development, which can go forward as a new “Living Lab” or “Lighthouse” project.

Current status of test area

Based on preliminary land repurposing assessment completed in November 2023, Figure 2 depicts possible sequencing of investment areas according to their readiness, differentiating into four categories:

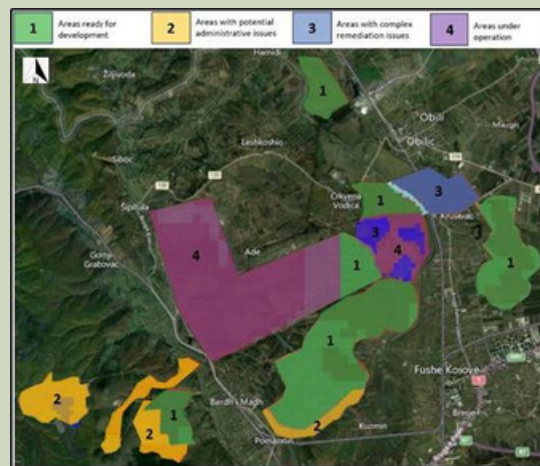


Figure 2 Possible sequencing of investments in the areas

- Areas ready for development: these are “low-hanging fruit”, which are available now for (almost) immediate repurposing with minor physical or administrative issues to address; some areas need additional earthwork preparation.
- Areas with potential administrative issues: these sectors are in principle available but may have complex ownership or stakeholder issues (“soft barriers”), e.g. the informal uses on the external overburden dumps;
- Areas with complex remediation issues: these are sectors that are in principle available for repurposing, but may have complex “technical barriers” to overcome before they are investment ready; key examples on the KEK lands are the area around a former gasification plant, fertilizer factory, phenol deposit etc.;
- Areas under operation: these sectors will become available only after current operations have concluded; they include the active mining area (Mirash pit), municipal waste dump, liquid fly ash deposits.

